

## PRODUCT INFORMATION SHEET

### Monoclonal antibodies detecting human antigens

### Anti-Hemoglobin S (HbS)

FITC ASR REF IQP-574F CONC 25 µg/mL

ASR Analyte Specific Reagent, analytical and performance characteristics are not established.  
The product complies with the ASR definitions of the U.S. Food & Drug Administration (FDA).



#### Description

**Clone** 57-8

**Isotype** IgG

#### Specificity

The HbS antibody recognizes the  $\beta$ -chain of the human hemoglobin. Reactivity is seen with human erythrocytes and nucleated red cell precursors containing HbS. No binding is observed with HbA, HbA2, HbC, HbE and HbF.

**Applications** Flow cytometry

#### Representative data

57-8 was analyzed by flow cytometry on a blood sample using adult red blood cells (RBCs). RBCs were fixed, permeabilized and stained with anti-HbS FITC.

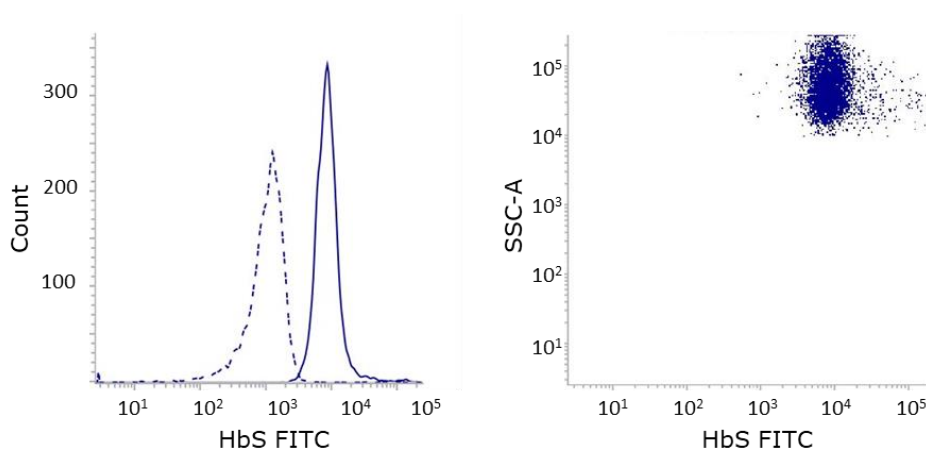


Figure: Flow cytometry analysis of whole blood stained with anti-hemoglobin S. Histograms: uninterrupted line represents HbS-high sample, interrupted line represents normal blood.



### Handling and Storage

Antibodies are supplied in 0.01 M sodium phosphate, 0.15 M NaCl; pH 7.3, 0.2% BSA, 0.09% sodium azide (NaN<sub>3</sub>). Store the vials at 2-8 °C. Monoclonal antibodies should be protected from prolonged exposure to light. Reagents are stable for the period shown on the vial label when stored properly.

**Warranty** Products sold hereunder are warranted only to conform to the quantity and contents stated on the label at the time of delivery to the customer. There are no warranties, expressed or implied, which extend beyond the description on the label of the product. IQ Products is not liable for property damage, personal injury, or economic loss caused by the product.

### Characterization

To ensure consistently high-quality reagents, each batch of monoclonal antibody is tested for conformance with characteristics of a standard reagent. Representative flow cytometric data is included in this data sheet.

**Warning** All products contain sodium azide. This chemical is poisonous and hazardous. Handling should be done by trained staff only.

### Explanation of used symbols



Description

Catalogue number



Caution, consult accompanying document



Keep away from (sun)light



Biological risks



Temperature limitation (°C)



Analyte Specific Reagent



Batch number



Use by yyyy-mm-dd



Manufacturer

	Conjugates		Ex -max (nm)	Em -max (nm)
P	PURE	Unconjugated antibody	-	-
F	FITC	Fluorescein Isothiocyanate	488	519
R	R-PE	R-Phycoerythrin	488, 532	578
C	CyQ	Tandem conjugate of R-PE-and Cy5.18	488, 532	667
A	APC	Allophycocyanin	595, 633, 635, 647	660
D	Dy-410	Violet Dye 410	405	460
PC	PerCP	Peridinin-chlorophyll-protein	488, 532	678



IQ Products BV  
Rozenburglaan 13a  
9727 DL Groningen, The Netherlands



+31 (0)50 57 57 000



+31 (0)50 57 57 002



Technical [marketing@iqproducts.nl](mailto:marketing@iqproducts.nl)



Orders [orders@iqproducts.nl](mailto:orders@iqproducts.nl)



[www.iqproducts.nl](http://www.iqproducts.nl)