

PRODUCT INFORMATION SHEET

Monoclonal antibodies detecting human antigens

Anti-Hemoglobin F (HbF1)

PURE	ASR	REF	IQP-567P	CONC	50 µg/ml
FITC	ASR	REF	IQP-567F	CONC	50 µg/ml
R-PE	ASR	REF	IQP-567R	CONC	50 µg/ml
Dy-410	ASR	REF	IQP-567D	CONC	50 µg/ml

ASR Analyte Specific Reagent, analytical and performance characteristics are not established. The product comply with the ASR definitions of the U.S. Food & Drug Administration (FDA).

 Description

Clone WBAC HbF1

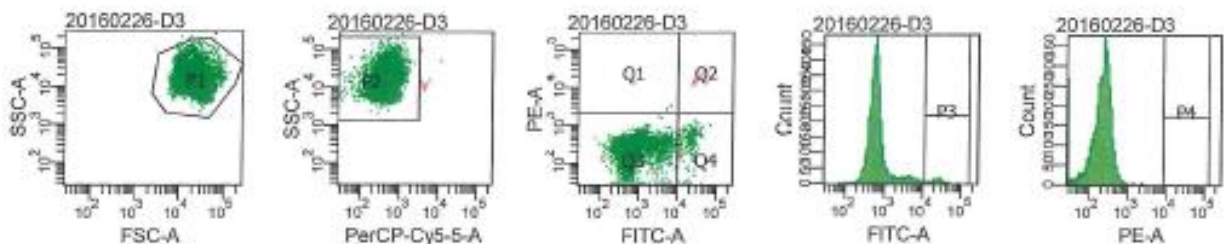
Isotype IgG1

Specificity The HbF1 antibody reacts with the γ -chain of the human fetal hemoglobin molecule in its intact form. Reactivity is seen with human fetal erythrocytes, adult F cells (adult erythrocytes expressing hemoglobin F), and nucleated red cell precursors containing HbF. No binding is observed with other forms of human hemoglobin, including HbA, HBA₂, HBA_{1C}, HbS, and HbE. Binding is not observed in ELISA assays for purified fetal hemoglobin alpha or gamma globulin chains alone, indicating the binding epitope is present on the intact HbF molecule only. HbF1 binding is at a different epitope on fetal hemoglobin from HbF2 clone, but has similar binding affinity as measured by flow cytometry and ELISA methods.

Application Flow cytometry

Representative Data

WBAC HbF1 was analyzed by flow cytometry on a blood sample using fetal red blood cells (RBCs) mixed with normal adult peripheral blood cells. RBCs were fixed, permeabilized and stained with anti-HbF1 FITC. The results show a good recovery of fetal blood cells in accordance with the expected value.





Handling and Storage

Antibodies are supplied in 0.01 M sodium phosphate, 0.15 M NaCl; pH 7.3, 0.2% BSA, 0.09% sodium azide (NaN₃). Store the vials at 2-8 °C. Monoclonal antibodies should be protected from prolonged exposure to light. Reagents are stable for the period shown on the vial label when stored properly.

Warranty Products sold hereunder are warranted only to conform to the quantity and contents stated on the label at the time of delivery to the customer. There are no warranties, expressed or implied, which extend beyond the description on the label of the product. IQ Products is not liable for property damage, personal injury, or economic loss caused by the product.

Characterization

To ensure consistently high-quality reagents, each batch of monoclonal antibody is tested for conformance with characteristics of a standard reagent. Representative flow cytometric data is included in this data sheet.

Warning All products contain sodium azide. This chemical is poisonous and hazardous. Handling should be done by trained staff only.

References

- 1 Davis BH, Ben-Ezra J, Bohmer RM, Lowder JN, Mahoney WC, Sacher RA, Stuart MY, van Agthoven A: Fetal Red Cell Detection; Proposed Standard. NCCLS Document H52-A, 2000.

Explanation of used symbols

	Consult instructions for use
	Catalogue number
	Sufficient for
	Caution, consult accompanying document
	Keep away from (sun)light
	Biological risks
	Temperature limitation (°C)
	Analyte Specific Reagent
	Batch code
	Use by yyyy-mm-dd
	Manufacturer

Products
bright fluorescence

	Conjugates		Ex -max (nm)	Em -max (nm)
P	PURE	Unconjugated antibody	-	-
F	FITC	Fluorescein Isothiocyanate	488	519
R	R-PE	R-Phycoerythrin	488, 532	578
C	CyQ	Tandem conjugate of R-PE-and Cy5.18	488, 532	667
A	APC	Allophycocyanin	595, 633, 635, 647	660
D	Dy-410	Violet Dye 410	405	460
PC	PerCP	Peridinin-chlorophyll-protein	488, 532	678
PCC	PerCP-Cy5.5	Tandem conjugate of PerCP-and Cy5.5	488, 532	695



IQ Products BV
Rozenburglaan 13a
9727 DL Groningen, The Netherlands

+31 (0)50 57 57 000
 +31 (0)50 57 57 002
 Technical marketing@iqproducts.nl
 Orders orders@iqproducts.nl
 www.iqproducts.nl