

**PRODUCT INFORMATION SHEET**  
Monoclonal antibodies detecting human antigens

**Isotype control IgG1** FITC **Isotype control IgG2a** R-PE **Isotype control IgG1** CyQ RUO REF IQP-425FRC 50 tests

RUO *For Research Use Only*



**Description**

<b>IgG1</b>	<i>Clone</i>	MCG1	<i>Isotype</i>	IgG1
<b>IgG2a</b>	<i>Clone</i>	MCG2a	<i>Isotype</i>	IgG2a

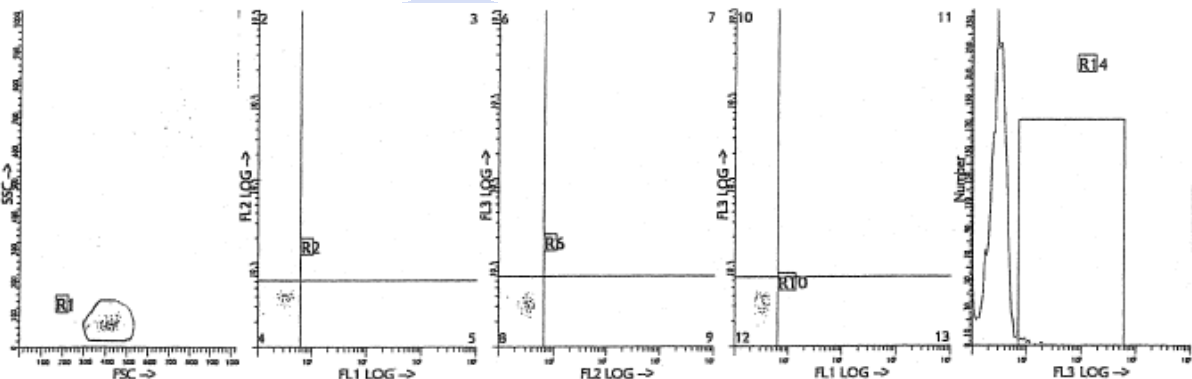
**Intended use** IQ Products' triple combination IQP-425FRC isotype control IgG1 with FITC, IgG2a R-PE and IgG1 with CyQ is a 3-color that is used to detect any non-specific binding, as well as binding mediated by interaction with Fc receptors using flow cytometry.

**Applications** Analysis of non-specific binding in flow cytometry.

**Usage** All these reagents are effectively formulated for direct immunofluorescent staining of human tissue for flow cytometric analysis using 10 µl/10<sup>6</sup> leukocytes for singles and 20 µl/10<sup>6</sup> leukocytes in case of dual and triple combinations. Since applications vary, each investigator should titrate the reagent to obtain optimal results.

**Representative Data**

Staining with the triple combination IgG1 FITC, IgG2a R-PE and IgG1 CyQ was performed using 20 µl of the dual and 100 µl blood sample.



bright fluorescence

**Immunofluorescence staining and lysing protocol**

Flow cytometry method for use with dual and triple combinations

1. Add 100 µl of EDTA-treated blood (i.e. approx. 10<sup>6</sup> leukocytes) to a 5 ml reagent tube. The content of one tube is sufficient to perform one test.  
**For combinations with anti-kappa and/or anti-lambda Ig see application note below.**
2. Add to each tube 20 µl of labeled monoclonal antibody combination.
3. Vortex the tube to ensure thorough mixing of antibody and cells.
4. Incubate the tube for 15 minutes at room temperature in the dark.
5. Add 100 µl of IQ Lyse (IQP-199 ready-to-use) and mix immediately.
6. Incubate for 10 minutes at room temperature in the dark.
7. Add 2 ml of demineralized water and incubate for 10 minutes in the dark.
8. Centrifuge the labeled cell suspension for 2 minutes at 1000 x g.
9. Remove the supernatant and resuspend the cells in 200 µl of PBS\*.
10. Analyze by flow cytometry within four hours (alternatively, the cells may be fixed by 0.05% of formaline in buffered saline for analysis the next day. Some antigens are readily destroyed upon fixation and this should be taken into account when using this alternative).

\* PBS: Phosphate Buffered Saline, pH 7.2

### Application note for anti-kappa and/or anti-lambda Ig combinations

Add 2 ml of PBS containing 0.001% (v/v) Heparin (**prewarmed to 37 °C**) to the cell suspension  
Vortex, centrifuge (2 min at 300x g) and discard the supernatant  
Repeat this step twice  
Resuspend the pelleted blood cells in 100 µl PBS containing 0.001% (v/v) Heparin



#### Handling and Storage

Antibodies are supplied either as 100 tests per vial (1 ml) for singles or 50 tests per vial (1 ml) for dual and triple combinations. They are supplied in 0.01 M sodium phosphate, 0.15 M NaCl; pH 7.3, 0.2% BSA, 0.09% sodiumazide (NaN<sub>3</sub>). Store the vials at 2-8 °C. Monoclonal antibodies should be protected from prolonged exposure to light. Reagents are stable for the period shown on the vial label when stored properly.

**Warranty** Products sold hereunder are warranted only to conform to the quantity and contents stated on the label at the time of delivery to the customer. There are no warranties, expressed or implied, which extend beyond the description on the label of the product. IQ Products is not liable for property damage, personal injury, or economic loss caused by the product.

#### Characterization

To ensure consistently high-quality reagents, each batch of monoclonal antibody is tested for conformance with characteristics of a standard reagent. Representative flow cytometric data is included in this data sheet.

**Warning** All products contain sodiumazide. This chemical is poisonous and hazardous. Handling should be done by trained staff only.

#### Explanation of used symbols

	Consult instructions for use
	Catalogue number
	Sufficient for
	In Vitro Diagnostic medical device
	Caution, consult accompanying document
	Keep away from (sun)light
	Biological risks
	Temperature limitation (°C)
	For Research Use Only
	Batch code
	Use by yyyy-mm-dd
	Manufacturer
	Authorized Representative in the European Community
	Conformité Européenne (European Conformity)

		<b>Label - tandem</b>	<b>Ex -max (nm)</b>	<b>Em -max (nm)</b>
P	PURE	purified material	-	-
F	FITC	FITC	488	519
R	R-PE	PE	488, 532	578
C	CyQ	PE-Cy5.18	488, 532	667
A	APC		595, 633, 635, 647	660
PC	PerCP		488, 532	678
PCC	PerCP-Cy5.5		488, 532	695



IQ Products BV  
Rozenburglaan 13a  
9727 DL Groningen, The Netherlands

+31 (0)50 57 57 000  
 +31 (0)50 57 57 002  
 Technical [marketing@iqproducts.nl](mailto:marketing@iqproducts.nl)  
 Orders [orders@iqproducts.nl](mailto:orders@iqproducts.nl)  
 [www.iqproducts.nl](http://www.iqproducts.nl)