

PRODUCT INFORMATION SHEET

Monoclonal antibodies detecting human antigens

Isotype control IgG1 FITC **Isotype control IgG2b** R-PE RUO REF IQP-277FR 50 tests

RUO *For Research Use Only*



Description

IgG1	Clone	MCG1	Isotype	IgG1
IgG2b	Clone	MCG2b	Isotype	IgG2b

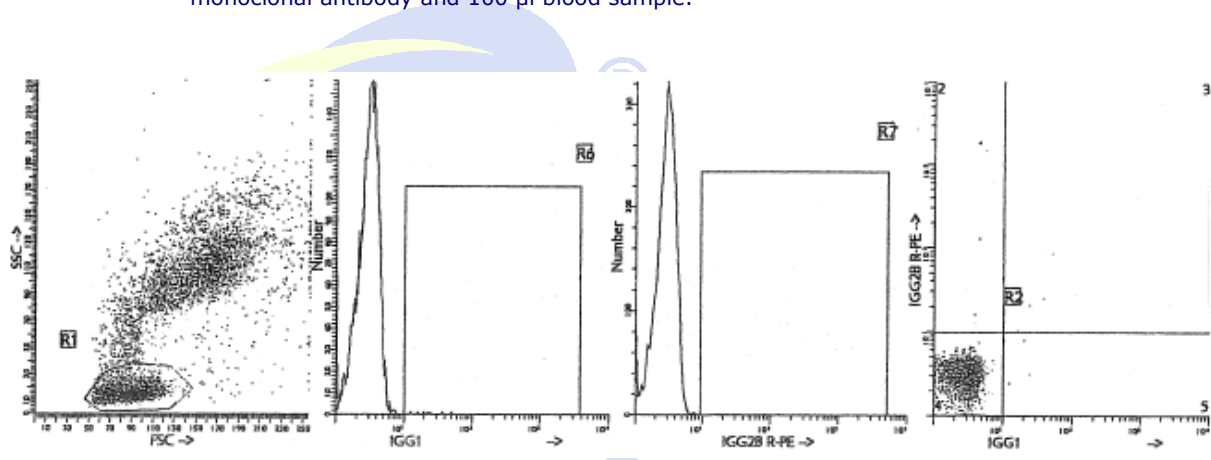
Intended use Isotype controls are used to detect any non-specific binding, as well as binding mediated by interaction with Fc receptors using flow cytometry

Applications Analysis of non-specific binding in flow cytometry.

Usage All these reagents are effectively formulated for direct immunofluorescent staining of human tissue for flow cytometric analysis using 10 μ L/ 10^6 leukocytes for singles and 20 μ L/ 10^6 leukocytes in case of dual and triple combinations. Since applications vary, each investigator should titrate the reagent to obtain optimal results.

Representative Data

Staining with the dual IgG1 FITC and IgG2b R-PE was performed using 20 μ l of the conjugated monoclonal antibody and 100 μ l blood sample.



Immunofluorescence staining and lysing protocol

Flow cytometry method for use with dual and triple combinations

1. Add 100 μ l of EDTA-treated blood (i.e. approx. 10^6 leukocytes) to a 5 ml reagent tube. The content of one tube is sufficient to perform one test.
For combinations with anti-kappa and/or anti-lambda Ig see application note below.
2. Add to each tube 20 μ l of labeled monoclonal antibody combination.
3. Vortex the tube to ensure thorough mixing of antibody and cells.
4. Incubate the tube for 15 minutes at room temperature in the dark.
5. Add 100 μ l of IQ Lyse (IQP-199 ready-to-use) and mix immediately.
6. Incubate for 10 minutes at room temperature in the dark.
7. Add 2 ml of demineralized water and incubate for 10 minutes in the dark.
8. Centrifuge the labeled cell suspension for 2 minutes at 1000 x g.
9. Remove the supernatant and resuspend the cells in 200 μ l of PBS.
10. Analyze by flow cytometry within four hours (alternatively, the cells may be fixed by 0.05% of formaline in buffered saline for analysis the next day. Some antigens are readily destroyed upon fixation and this should be taken into account when using this alternative).

* PBS: Phosphate Buffered Saline, pH 7.2

Application note for anti-kappa and/or anti-lambda Ig combinations

Add 2 ml of PBS containing 0.001% (v/v) Heparin (**prewarmed to 37 °C**) to the cell suspension
Vortex, centrifuge (2 min at 300x g) and discard the supernatant
Repeat this step twice
Resuspend the pelleted blood cells in 100 µl PBS containing 0.001% (v/v) Heparin



Handling and Storage

Antibodies are supplied either as 100 tests per vial (1 ml) for singles or 50 tests per vial (1 ml) for dual and triple combinations. They are supplied in 0.01 M sodium phosphate, 0.15 M NaCl; pH 7.3, 0.2% BSA, 0.09% sodiumazide (NaN₃). Store the vials at 2-8 °C. Monoclonal antibodies should be protected from prolonged exposure to light. Reagents are stable for the period shown on the vial label when stored properly.

Warranty Products sold hereunder are warranted only to conform to the quantity and contents stated on the label at the time of delivery to the customer. There are no warranties, expressed or implied, which extend beyond the description on the label of the product. IQ Products is not liable for property damage, personal injury, or economic loss caused by the product.

Characterization

To ensure consistently high-quality reagents, each batch of monoclonal antibody is tested for conformance with characteristics of a standard reagent. Representative flow cytometric data is included in this data sheet.

Warning All products contain sodiumazide. This chemical is poisonous and hazardous. Handling should be done by trained staff only.

Explanation of used symbols



REF

Consult instructions for use

Catalogue number



Sufficient for

IVD

In Vitro Diagnostic medical device



Caution, consult accompanying document



Keep away from (sun)light



Biological risks



Temperature limitation (°C)

RUO

For Research Use Only

LOT

Batch code



Use by yyyy-mm-dd



Manufacturer

EC/REP

Authorized Representative in the European Community



Conformité Européenne (European Conformity)

		Label - tandem	Ex -max (nm)	Em -max (nm)
P	PURE	purified material	-	-
F	FITC	FITC	488	519
R	R-PE	PE	488, 532	578
C	CyQ	PE-Cy5.18	488, 532	667
A	APC		595, 633, 635, 647	660
PC	PerCP		488, 532	678
PCC	PerCP-Cy5.5		488, 532	695



IQ Products BV
Rozenburglaan 13a
9727 DL Groningen, The Netherlands

+31 (0)50 57 57 000
+31 (0)50 57 57 002
Technical marketing@iqproducts.nl
Orders orders@iqproducts.nl
www.iqproducts.nl